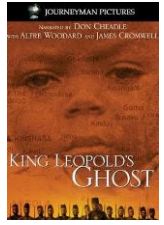




## Blog: *King Leopold's Ghost* / *Heart of Darkness*

Mr. Eble, AP Language & Composition

For next class, please complete the following on your blog. Be sure to reference specific parts of the text, as well as specific parts of the film.



Consider Marlow's depiction of the colonial situation at the Outer / Central Stations in *Heart of Darkness*, as well as his experience in Brussels.

- Analyze **how** Conrad presents one colonial agent (in Africa or in Brussels) and the African natives Marlow encounters throughout his trip (in both Part I and II). Use quotes and analyze Conrad's diction / syntax to demonstrate how he presents these individuals.
- Make a connection between what you viewed in *King Leopold's Ghost* in order to show how Conrad's depiction of these individuals in *Heart of Darkness* has an anchor in historical information related to King Leopold's exploitation of the Belgian Congo at the turn of the century.

If you're a paragraph / page-length person, I'd suggest that you write a sound paragraph for both the colonial agents in Africa and the native Africans; each paragraph should include analysis of Conrad's diction / syntax, as well as examples from the film that demonstrate the historical background.

This blog is worth **40 points** for your writing grade.

During our next class, we'll have a seminar over what we've read and your writing on this blog.